



Elaine L. Figgs

OCT 27, 1928 - AUG 18, 2025



Scan to Visit

Table of Contents

Obituary	Page 3
Events	Page 5
Tribute Wall	Page 6
Media	Page 7



Elaine L. Figgs

OCT 27, 1928 - AUG 18, 2025

Elaine L. Figgs, a lifelong Seaford native and beloved member of the community, passed away peacefully on August 18, 2025, at Methodist Manor House at the age of 96. Her life was a beautiful reflection of faith, family, and service.

Born on October 27, 1928, to George and Myrtle Lankford, Elaine grew up in Seaford, Delaware, where her kind heart and vibrant spirit began to shine at an early age. At just 12 years old, she worked at the Palace and Layton Theatres, interacting with local audiences and embracing the charm that would define her life.

Elaine graduated from Seaford High School in the Class of 1946 and went on to build a remarkable 64-year career in banking. She began at First National Bank, which later became Bank of Delaware and then PNC, where she served as head teller and earned the admiration of generations of customers and coworkers. Even after retiring at the age of 84, she continued working as a travel manager, combining her lifelong passion for travel with her gift for connecting with people.

Elaine cherished spending time with family and friends, especially during lively games of cards, bingo, dominoes, and Rummikub. She loved camping, cooking, and gathering around the table—always with warmth and laughter. In her later years, she especially enjoyed her nightly visits with her “adopted” son, Gordon Logan, whose companionship brought her great comfort and joy.

Her faith was a guiding light. Elaine was the oldest and one of the most devoted members of Mt. Olivet United Methodist Church, where she served faithfully in many capacities throughout the years. She was also a dedicated member of numerous organizations, including the Seaford Ladies Auxiliary, VFW, American Legion in Seaford, Soroptimist International, and the Daughters of the American Revolution, with her home chapter being the Mary Vining Chapter and serving as an associate member of the Washington-Lewis Chapter.



Obituary

Elaine L. Figgs

OCT 27, 1928 - AUG 18, 2025

Elaine was described by all who knew her as sweet, kind, funny, faith-filled, and deeply family-oriented. She was the heart of her family, a constant presence of love and strength.

Elaine was preceded in death by her beloved husband of 65 years, Robert Figgs, and by her parents, George and Myrtle Lankford and her loving sister Marguerite Waite.

She is survived by her daughters Mattie Stevenson and husband Keith of Houston, Texas, and Tana Figgs of Seaford, Delaware; granddaughter Leah Paul and husband JR; and great-grandson Raylan Paul. She also leaves behind her “adopted” son Gordon Logan of Seaford, Delaware; her niece Cindy Merchant of Fredericksburg, Virginia; grandnieces Kathryn Palazzolo of Elmhurst, New York, and Kelly Naughton of Alexandria, Virginia; and a loving host of other nieces, nephews, cousins, and extended family members.

Elaine's family extends heartfelt thanks to the staff of Methodist Manor House for their kind and compassionate care.

A memorial service for Elaine will be held on Tuesday, September 2 at 1:00 p.m. at Methodist Manor House, 1001 Middleford Road, Seaford, Delaware 19973.

In lieu of flowers, the family requests donations be made in Elaine's memory St. Jude's Children's Research Hospital.



Events

Elaine L. Figgs

OCT 27, 1928 - AUG 18, 2025

Memorial Service

 **Tuesday**, September 2, 2025

 1:00 PM ET

 **Methodist Manor**
1001 Middleford Road, Seaford DE 19973





Tribute Wall

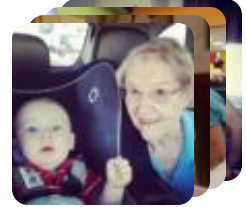
Elaine L. Figgs

OCT 27, 1928 - AUG 18, 2025



Elle Paul shared 8 photos to the **Tribute Wall** album.

August 21 at 12:16 PM





Media

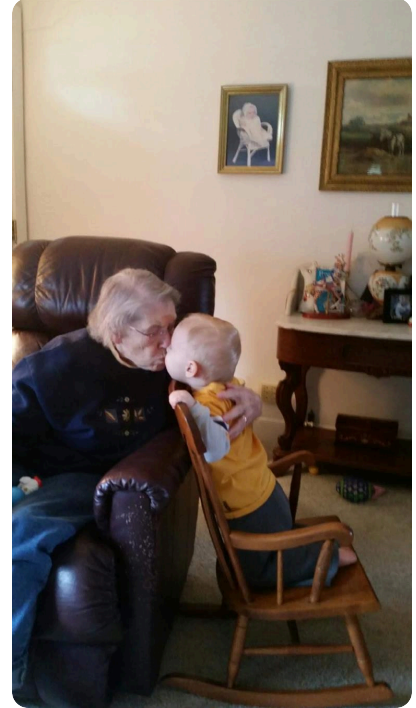
Elaine L. Figgs

OCT 27, 1928 - AUG 18, 2025



Elle Paul shared 8 photos to the **Tribute Wall** album.

August 21 at 12:16 PM

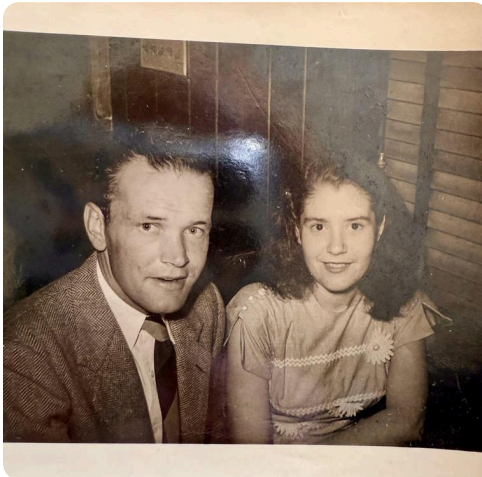
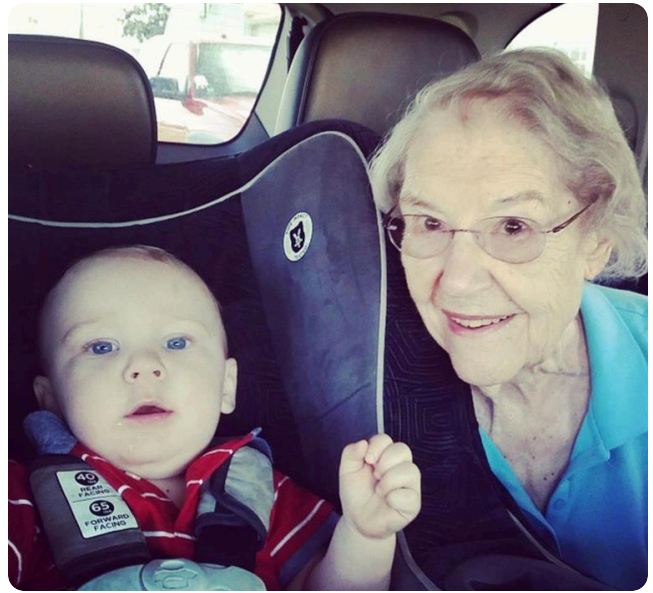




Media

Elaine L. Figgs

OCT 27, 1928 - AUG 18, 2025





Memories only last if you share them

Join us in honoring Elaine by contributing to a collection of shared memories.



Scan to Visit

